

Your first choice in digital cutting

S3 Technical Overview



High-speed flatbed cutter/router
for maximum productivity

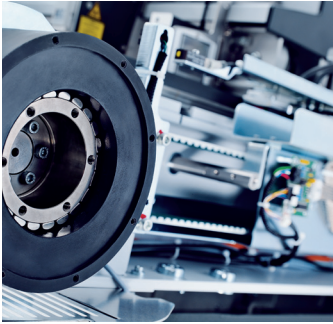
The modular cutter concept

Intelligent, efficient, ready for the future

Zünd cutting systems are well known for being modular. The super-fast S3 line of cutters is no different - it can be changed, expanded, upgraded any time. Modular tooling allows for processing a wide variety of materials up to a maximum thickness of 25mm/1". Various levels of automated material-handling turn the S3 into the perfect all-round production system.

Unrivaled innovation

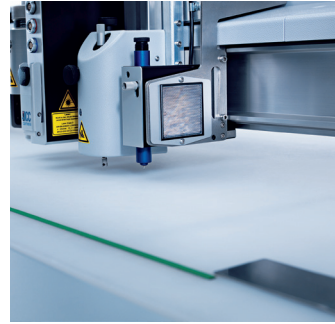
The S3 is fast, compact, and complies with the highest safety standards. Innovation distinguishes every aspect of this line of cutting systems. A true Swiss Quality Product - uncompromising in precision and design!



Maintenance-free, high-performance direct drive delivers exceptional productivity.



Compact design, space-saving footprint.



S3 exceeds highest safety standards.

One machine, many functions

Up to two tool modules can be freely combined. A camera, laserpointer, and marking module provide additional functionality.



Universal module
UM-S



Kiss-cutting module
KCM-S



Marking module
electric or pneumatic
MAM-SE/MAM-SP



ICC Camera
SEM-ICC

Tools for every application

All tools shown here can be inserted into the universal module. With the appropriate tool, the S3 can handle many materials, many applications.



UCT
Universal cutting tool



EOT
Oscillating cutting tool, electric



PPT
45° Bevel-cutting tool for materials up to 5mm/3/16" thick



KCT
Kiss-cutting tool



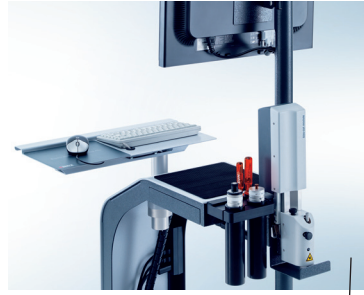
POT
Oscillating cutting tool, pneumatic



DRT
Driven rotary tool for textile and fibrous materials

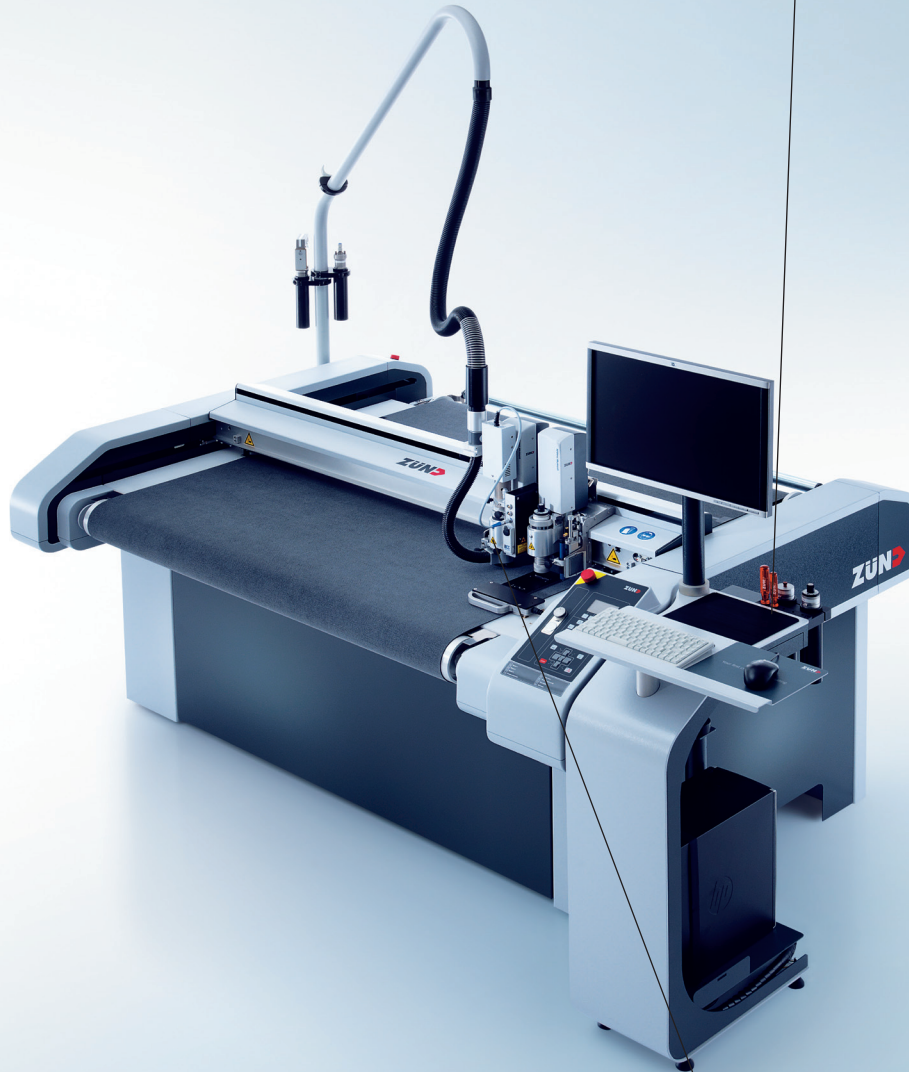
The S3 is fast!

A high-performance direct drive system maximizes processing speeds and accuracy. Maintenance-free, perfectly synchronized components guarantee maximum productivity and longevity.



Simple operation

Vacuum width adjustments are performed automatically through Zünd Cut Center Software.



CTT1
Creasing tool type 1
for corrugated
cardboard



RBT
Raster Braille tool



URT
300W universal router



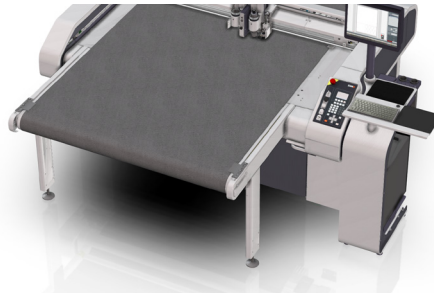
CTT2
Creasing tool type 2
for carton and
plastics



UDT
Universal drawing
tool

Material transport

For continuous, uninterrupted cutting of rolled materials and jobs longer than the cutter. A special transport system with automatic roll-end detection is available for optimal kiss-cutting of self-adhesive materials. The conveyerised transport system is recommended for through-cutting applications.



Cutter extensions

An extension at the front of the cutter increases efficiency by providing an area for unloading cut parts without interrupting the cutting process. An extension at the back permits loading sheets and boards while the machine is cutting. Together, the extensions provide the perfect setup for non-stop production.

M

L

XL

2XL

3XL



S3 M-800
1330×800 mm | 52"×31"



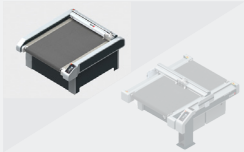
S3 M-1200
1330×1200 mm | 52"×47"



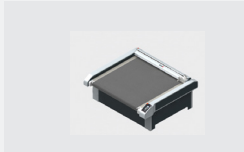
S3 L-1200
1800×1200 mm | 70"×47"



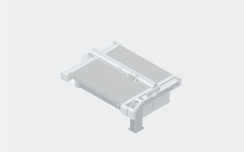
S3 XL-1200
2270×1200 mm | 89"×47"



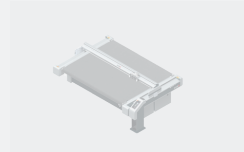
S3/G3 M-1600
1330×1600 mm | 52"×63"



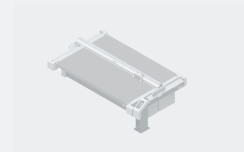
S3 L-1600
1800×1600 mm | 70"×63"



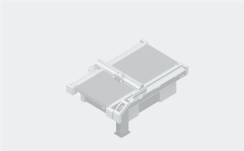
G3 XL-1600
2270×1600 mm | 89"×63"



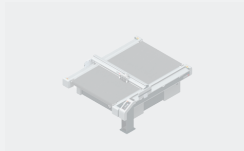
G3 2XL-1600
2740×1600 mm | 107"×63"



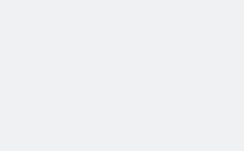
G3 3XL-1600
3210×1600 mm | 126"×63"



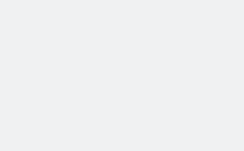
G3 M-2500
1330×2500 mm | 52"×98"



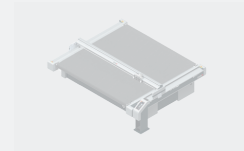
G3 L-2500
1800×2500 mm | 70"×98"



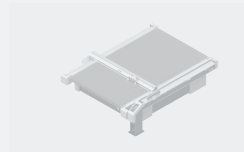
G3 L-3200
1800×3200 mm | 70"×125"



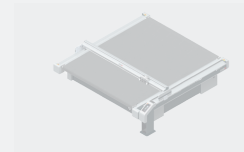
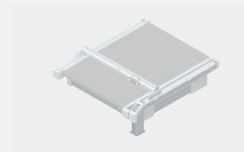
G3 2XL-3200
2740×3200 mm | 107"×125"



G3 3XL-2500
3210×2500 mm | 126"×98"



G3 XL-3200
2270×3200 mm | 89"×125"



G3 3XL-3200
3210×3200 mm | 126"×125"

Verkürzung = 15 mm

Roll-off units

The universal passive roll-off is ideal for applications involving frequent roll changes and most non-elastic materials. For special applications and those involving materials prone to stretching (e.g. textiles), passive and active shaft-based roll-off units are available. Combined with a material-guide roll, these ensure accurate, wrinkle-free material transport.

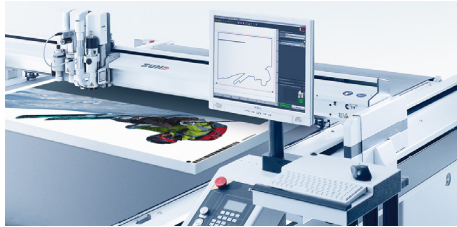
Universal roll-off unit



Roll-off unit with shaft



Solid reasons for Zünd cutting systems



The new software standard for digital cutting

Digital cutting has never been easier! Zünd Cut Center software dynamically guides the operator through the cutting process. It minimizes set-up times, eliminates mistakes, and makes sure the cutter is running at maximum productivity levels at all times. The operator simply scans a barcode, installs the proper tooling - and cutting begins!



Versatility and longevity

No other digital cutters or routers are as flexible or adaptable as Zünd systems with their modular tool concept. The Zünd S3 line can process materials up to 1" thick. The selection of sizes, modules, tools, and material-handling options is extensive yet straightforward.



Swiss workmanship, quality, reliability

Zünd cutters are specifically designed for 24/7 operation. They offer a unique combination of heavy-duty construction and superb accuracy. The standard 2-year manufacturer's warranty is further evidence of Zünd's commitment to quality.



Ergonomics and user-friendliness

Designed by multiple award-winning industrial designer Richard Amiel, Zünd cutters are set up for optimal workflow. Ergonomically designed user-interface components and a 30mm/1.2" clearance between beam and cutting surface allow for easy, efficient operation.



Safety and eco-friendliness

With the S3, Zünd again sets new standards in safety and concern for the environment. All safety features are standard equipment. Minimal energy requirements and efficient use of resources reduces operating costs and the impact on the environment.



The best from the global market leader

Zünd cutting systems are not only the product of celebrated Swiss workmanship but also of Zünd's 25 years of innovative digital cutter development and 16,000 installations worldwide. The innovative concept and construction of Zünd cutters is evidence of Zünd's technological leadership in a global market.

Verkürzung = 15 mm

A good reputation with good reason

Performing a cut above

As family-owned business based in Altstätten, Switzerland, Zünd Systemtechnik AG has been the leading developer of digital cutting technologies for more than 25 years. Zünd epitomizes Swiss quality in machine construction and engineering and has for years been synonymous with precision, performance, and reliability. It is no wonder Zünd has more digital flatbed cutters installed worldwide than any other supplier.



02/2012

Worldwide distribution and service

Zünd and its worldwide network of distributors and service partners excel in providing expert before- and after-sales support and uncompromising service in close proximity to their customer base. All service technicians at our subsidiaries in Hong Kong and the USA, as well as many of our partners' technicians in more than 40 countries, are trained and certified at the factory in Switzerland. Service hotlines worldwide ensure continuous customer care, maximum machine uptime, and uninterrupted production.



Headquarter
Zünd Systemtechnik AG
Industriestrasse 8
CH-9450 Altstätten
T +41 71 757 81 00
F +41 71 757 81 11
info@zund.com
www.zund.com

ZÜND
swiss cutting systems